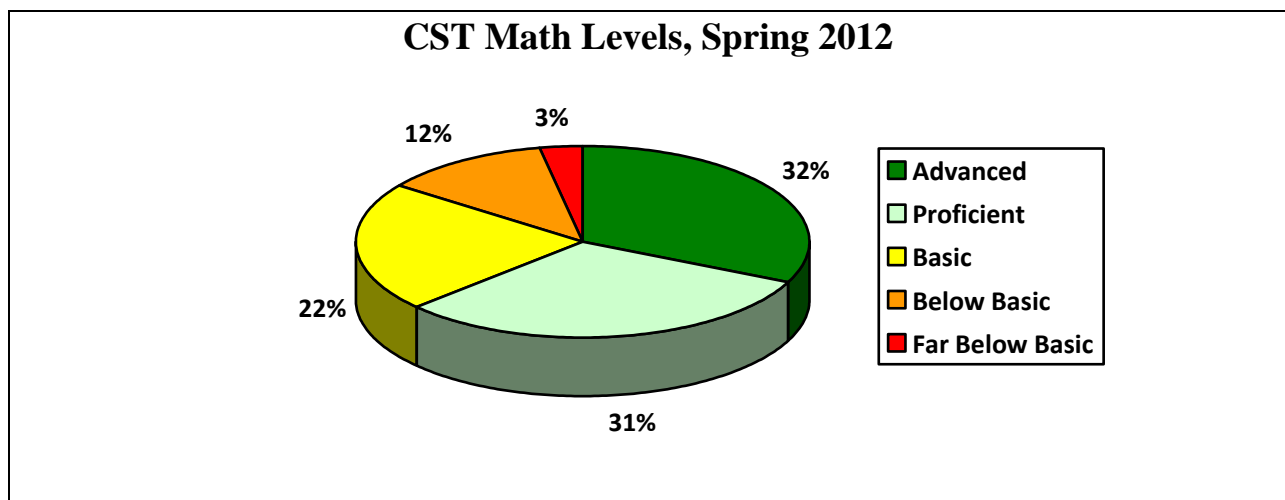
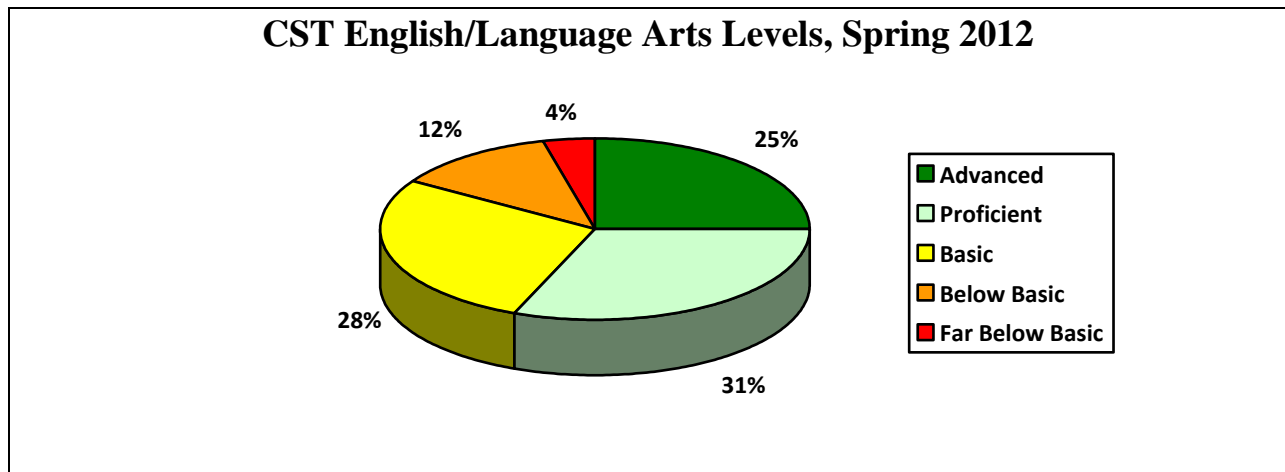


SERRF Program ~ Highlights of Results 2011-2012 Project Year

During the 2011-2012 school year, **3,393 students** participated in **SERRF**.

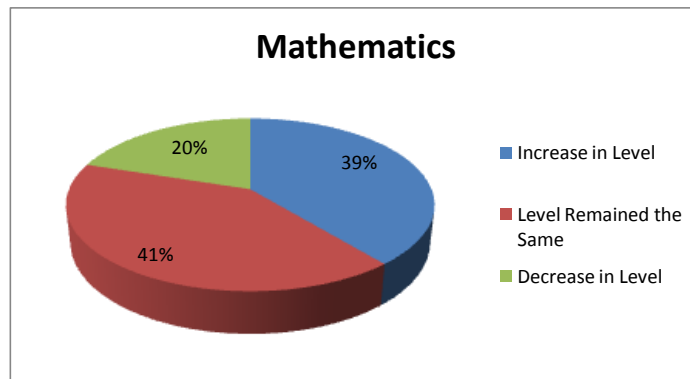
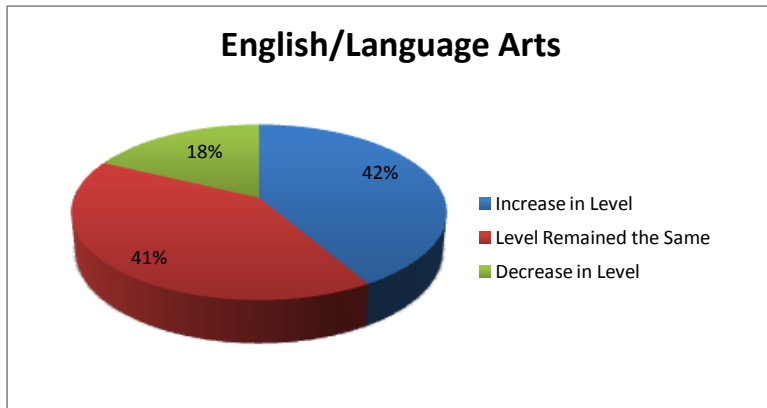
CST Results

The Content Standard Test results in English/Language Arts and Math are used in the evaluation of the program. The graphs below illustrate the percentage of students (those participating in the **SERRF** program for 60 days or more) scoring at each of the levels on the CST (spring 2012). A total of 1,186 students participated in **SERRF** for 60 days or more and had CST results.



- 56% of the students (659) scored at the Proficient or Advanced level in English/Language Arts.
- 64% of the students (756) scored at the Proficient or Advanced level in Math.

Baseline and spring 2012 CST levels were provided for students in third through eighth grades. A total of 701 students had baseline and 2012 CST results and a minimum of 60 days of participation in **SERRF**. The following graphs illustrate the percentage of students who demonstrated an increase in levels, a decrease in levels, or maintained the same level.

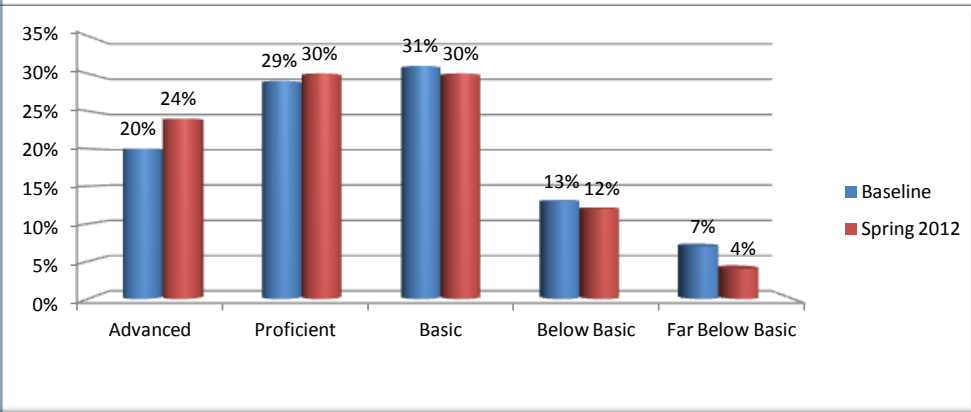


- 42% of the students demonstrated an increase in achievement level in English/Language Arts.
- 39% of the students demonstrated an increase in achievement level in Math.

The following graphs compare the percentage of students with matched CST scores at each performance level for baseline and 2011-2012 program years.

English/Language Arts

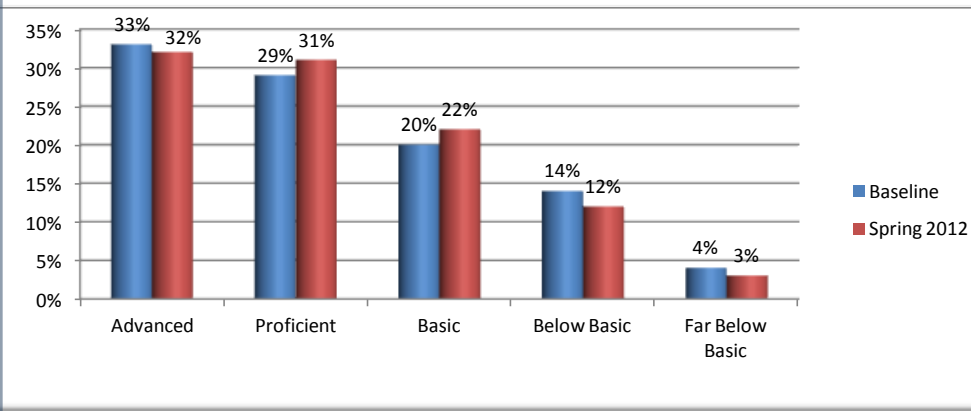
**English/Language Arts
Percentage of Students Scoring at Each Level**



- On the baseline CST, **49%** scored at the Advanced and Proficient levels.
- In spring 2012, **54%** scored at the Advanced and Proficient levels.

Math

**Math
Percentage of Students Scoring at Each Level**



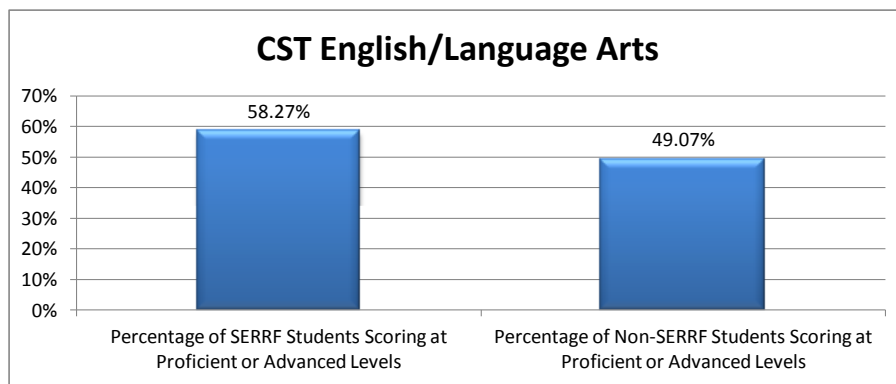
- On the baseline CST, **62%** scored at the Advanced and Proficient Levels
- In spring 2012, **63%** of the students scored at these levels.

Comparison of CST Results SERRF and Non-SERRF Students

The following graphs provide a comparison of the percentage of **SERRF** students (those participating in **SERRF** for 60 days or more in 2011-2012) and those students attending Tehama County Schools who did not participate in **SERRF** scoring at the Proficient and Advanced levels.

CST English/Language Arts Results

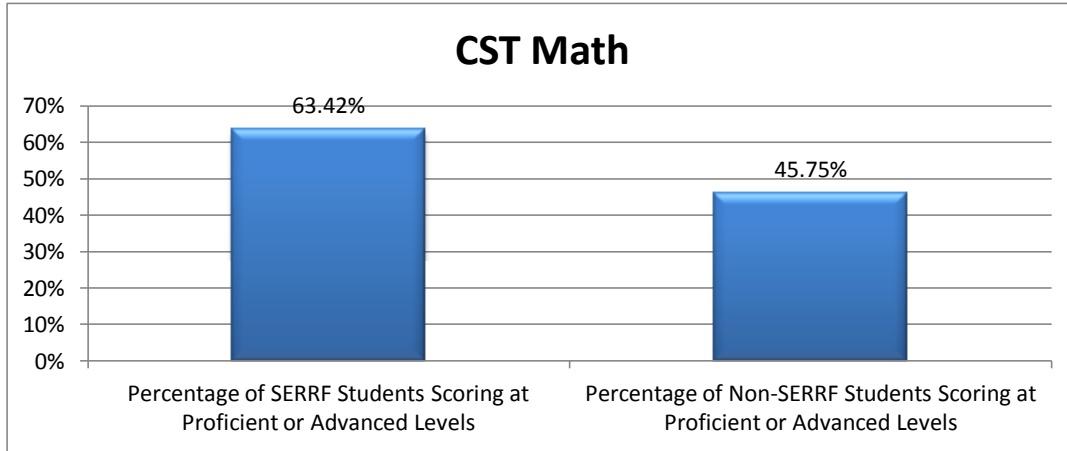
Percentage of Students Scoring at the Proficient or Advanced Levels on the CST English/Language Arts, 2011-2012



A greater percentage of **SERRF** students (attending 60 days or more of) scored at the proficient or advanced levels on the English/Language Arts portion of the CST than those Tehama County students who did not participate in **SERRF**.

CST Math Results

Percentage of Students Scoring at the Proficient or Advanced Levels on CST Math, 2011-2012



A greater percentage of **SERRF** students have scored at the proficient and advanced levels on the Math portion of the CST than those Tehama County students who were not enrolled in **SERRF**.

Regular School Day Attendance

School attendance is another measure used to evaluate the effectiveness of the **SERRF** program. For the 2011-2012 school year, a total of 1,379 students have school attendance information and have participated in the **SERRF** program for a minimum of 60 days.

- 87% of the students have attendance rates of 95% or above.
- The mean attendance rate for the students is 97%.